

## DATA - 1600 FUTURA - PATTERN PLOTTER CUTTER

**Plotting and Cutting Width:** 66 inches

**Plotting Speed:** 25 Yards per hour

**Cutting Speed:** 15 yds per hour

**Plotting Device Inkjet Printing:** HP45 cartridge

**Cartridge Cutting Device:** Alloy Knife

**Plotting Material:** 60,63,67 inch plotter paper 45WT - 50WT / 60,63,67 inch kraft paper 40WT-45WT

**Cutting Material:** Pattern paper manila/tag paper 100WT - 150WT - kraft paper

**Carboard Fixing:** Adsorption + roller device

**Sending Paper System:** Auto-sending, servomotor, closed loop control system

**Drive Software:** Velocity Control Center

**File Format:** HPGL / HPG / PLT

**Plotter Port:** USB / LAN

**Mechanical accuracy:** 1/100 of an inch

**Software Platform:** Windows 98, 2000, NT, XP, Windows 7, Windows 8, Windows 10, Windows 11, Mac.

**Operate Power:** 110V/220V

**Gross Weigth:** 309 Pounds

**Machine Dimension:** 92" x 24" x 40"

**Environment:** Temperature 10°C - 30°C, Humidity RH 15 -85% No condensation.

Compatible with: Optitex - Lectra - Gerber Accumark - Tukatech - Adaces -StyleCAD - PAD System - \*CL03D - \*AutoCAD - \*Browzwear \*(via optional conversion tools)  
Plotting files from .PLT - .HPGL - HPG files coming from most CAD systems in the market

## Q & A

### Does the plotter come assembled?

No, the plotter is not pre-assembled. Our technical team will provide the support needed for proper setup.

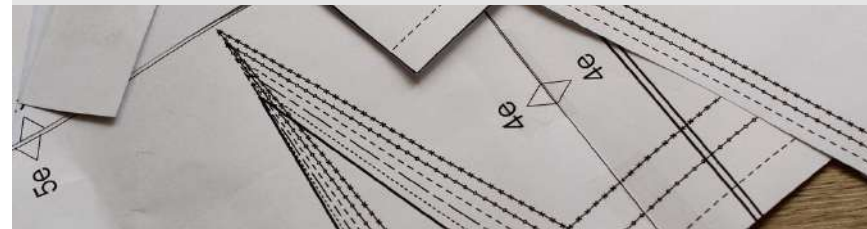
### What type of ink does it use?

The plotter uses HP #45 black ink cartridges, which are widely available at retailers such as Target, OfficeMax, Office Depot, and Amazon. You may also choose to purchase cartridges through Velocity Plotters.

### What type of paper is recommended for the 1600 Futura Plotter?

Pattern paper (Manila / Tag), Kraft / Brown paper, plotter paper. Recommended widths: 55", 60", 63", 66". Core: 3-inch tube

- Manila / Tag: 100 WT - 120 WT Paper thickness
- Kraft / Brown: 40 WT - 45 WT Paper thickness



## INFO

For more information contact us at  
info@velocityplotters.com or call 833-275-6888

**www.velocityplotters.com**