



DATA - FLATBED PLOTTER CUTTER

Control System: Closed-loop and servo control system

Table / Repeat Accuracy: Ultra lighter Hi-tech table / <0.1 mm

Plotting / Cutting Device: Inkjet HP45 / Alloy Knife

Plotting Speed / Max Cutting Speed: 70 m2 per hour / 1000 mm per second (MAX)

Data Transmission: USB / LAN

Material / Thickness of Cutting: All kinds of hard cardboard / 0.1 mm - 1.1 mm

Material fixing: Vacuum adsorption

Software DPI: Bitmap 600 DPI, Vector 0.04 mm

Working Voltage: 86-264 V / 2.0 kW

Format: HPGL / PLT compatible format

Platform Structure / Repeatability: Ultra high tech suction platform / <0.1 mm

Software Platform: Windows 98, 2000, NT, XP, Windows 7, Windows 8, Windows 10, Windows 11, Mac.

Available Sizes: 47" x 35" - 59" x 35" - 59" x 47"

Q & A

Does the plotter come assembled?

No, the plotter is not pre-assembled. Our technical team will provide the support needed for proper setup.

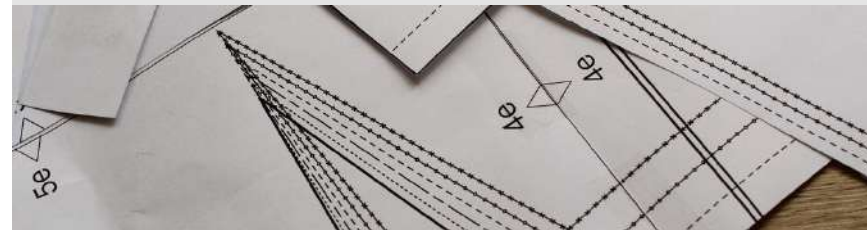
What type of ink does it use?

The plotter uses HP #45 black ink cartridges, which are widely available at retailers such as Target, OfficeMax, Office Depot, and Amazon. You may also choose to purchase cartridges through Velocity Plotters.

What type of paper can I use on the Flatbed Cutter?

Pattern paper (Manila / Tag), Kraft / Brown paper, plotter paper, cardboard, PVC, and plastic board Recommended widths: 36", 45", 54". Core: 3-inch tube

- Manila / Tag: 100 WT - 120 WT - 150 WT Paper thickness
- Kraft / Brown: 40 WT - 50 WT Paper thickness



INFO

For more information contact us at
info@velocityplotters.com or call 833-275-6888

www.velocityplotters.com

Compatible with: Optitex - Lectra - Gerber Accumark - Tukatech - Adaces -StyleCAD - PAD System - *CLO3D - *AutoCAD - *Browzwear *(via optional conversion tools)

Plotting files from .PLT - .HPGL - HPG files coming from most CAD systems in the market