



## DATA - VECTOR 2400 FOUR HEAD PLOTTER

**Plotting Technology:** InkJet Plotting.

**Control System:** Closed loop servo control system both length and width direction.

**DPI:** 300 dpi.

**Maximum Plotting:** 88 inches in width.

**Plotting Speed:** 100 yds per hour (bidirectional).

**Operation and Display:** Three key operation panel, self-check, LED status display.

**Type of Ink:** HP45 cartridge

**Drive Software:** Velocity Control Center

**Paper Type:** Plotter paper 60", 63", 66", 72", 86, 88" - 30 WT - 35 WT paper thickness.

**Plotter Output:** : HPGL / HPG / PLT

**Plotter Port:** USB / LAN

**Software Platform:** Windows 98, 2000, NT, XP, Windows 7, Windows 8, Windows 10, Windows 11, Mac.

**Power:** 86 - 264 V adapted

**Plotter Dimension:** 120" x 21" x 40"

**Environment:** Temperature 10°C - 30°C, Humidity RH 15 -85% No condensation.

## Q & A

### Does the plotter come assembled?

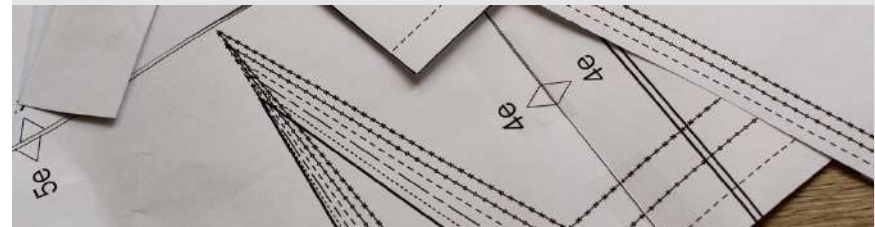
No, the plotter is not pre-assembled. Our technical team will provide the support needed for proper setup.

### What type of ink does it use?

The plotter uses HP #45 black ink cartridges, which are widely available at retailers such as Target, OfficeMax, Office Depot, and Amazon. You may also choose to purchase cartridges through Velocity Plotters.

### What type of paper is recommended for the Vector 2400 Four Head Plotter?

You can use plotter paper, recommended sizes 60", 63", 66", 70", 86", 88" inches in width. 30WT - 35WT paper thickness. 3 inches tube core.



## INFO

For more information contact us at  
[info@velocityplotters.com](mailto:info@velocityplotters.com) or call 833-275-6888

**[www.velocityplotters.com](http://www.velocityplotters.com)**