



DATA - VECTOR 2400 TWO HEAD PLOTTER

Plotting Technology: InkJet Plotting.

Control System: Closed loop servo control system both length and width direction.

DPI: 300 dpi.

Maximum Plotting: 88 inches in width.

Plotting Speed: 50 - 65 yds per hour (bidirectional).

Operation and Display: Three key operation panel, self-check, LED status display.

Type of Ink: HP45 cartridge

Drive Software: Velocity Control Center

Paper Type: Plotter paper 60", 63", 66", 72", 86, 88" - 30 WT - 35 WT paper thickness.

Plotter Output: : HPGL / HPG / PLT

Plotter Port: USB / LAN

Software Platform: Windows 98, 2000, NT, XP, Windows 7, Windows 8, Windows 10, Windows 11, Mac

Power: 86 - 264 V adapted

Plotter Dimension: 120" x 21" x 40"

Environment: Temperature 10°C - 30°C, Humidity RH 15 -85% No condensation.

Q & A

Does the plotter come assembled?

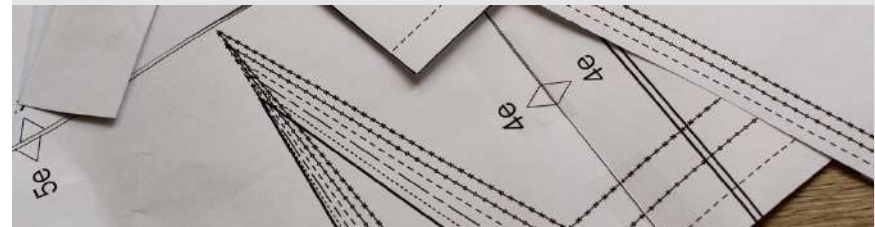
No, the plotter is not pre-assembled. Our technical team will provide the support needed for proper setup.

What type of ink does it use?

The plotter uses HP #45 black ink cartridges, which are widely available at retailers such as Target, OfficeMax, Office Depot, and Amazon. You may also choose to purchase cartridges through Velocity Plotters.

What type of paper is recommended for the Vector 2400 Two Head Plotter?

You can use plotter paper, recommended sizes 60", 63", 66", 70", 86", 88" inches in width. 30WT - 35WT paper thickness. 3 inches tube core.



INFO

For more information contact us at
info@velocityplotters.com or call 833-275-6888

www.velocityplotters.com